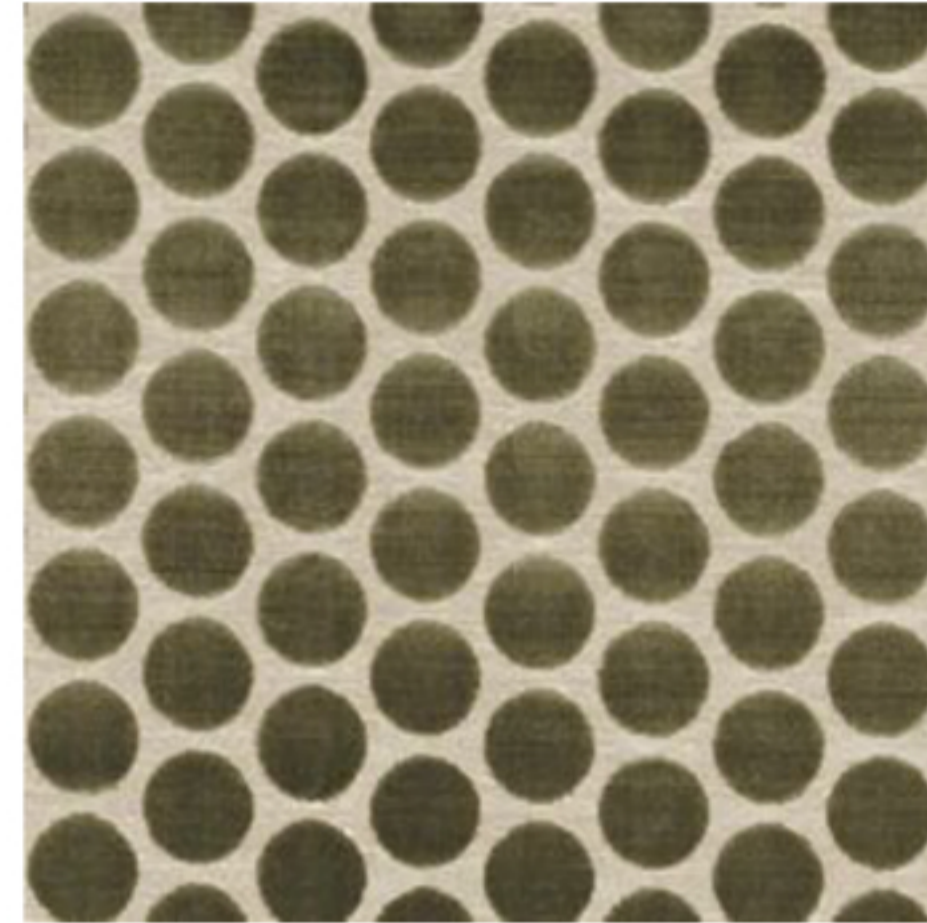




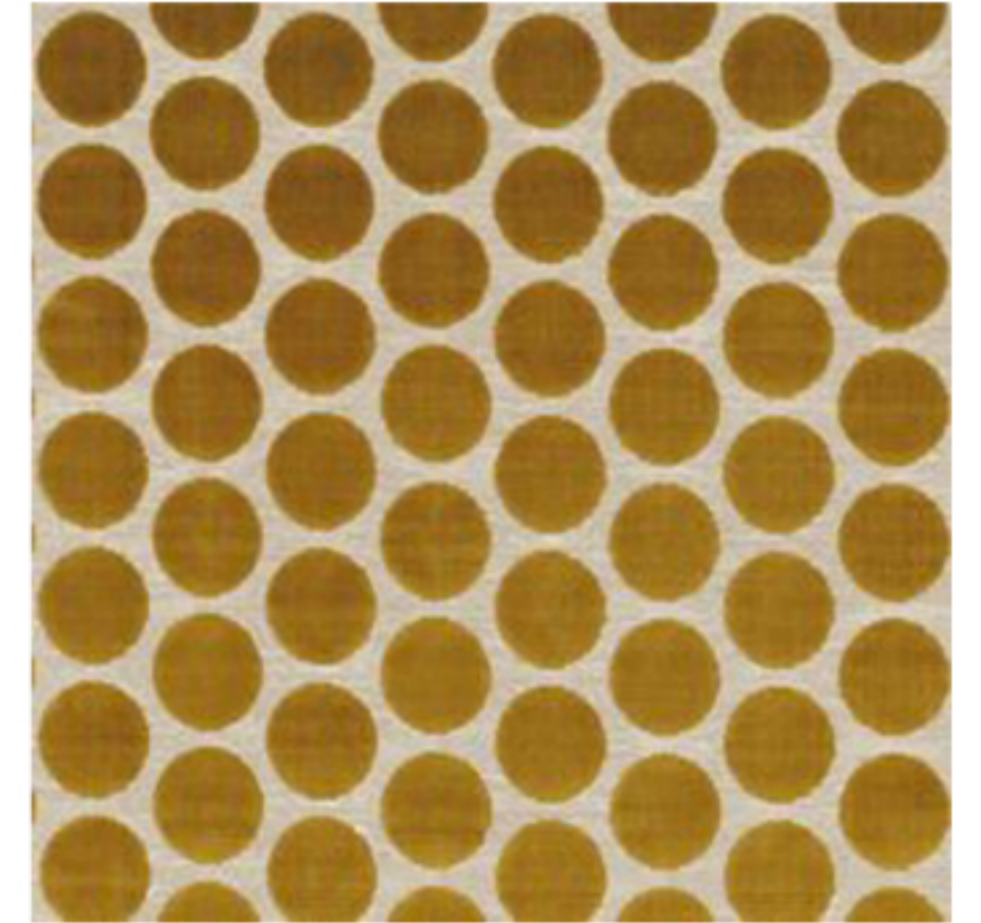
47690159
CASAMANCE



47690268
CASAMANCE



47690486
CASAMANCE



47690595
CASAMANCE



47690377
CASAMANCE

Fifties 4769 ... 57 1/2" +/- 146 cm 56" +/- 142 cm 76% viscose 13% polyester 8% cotton 3% linen +/- 860 gr/m² ↔ 2" +/- 5 cm 3 1/2" +/- 9 cm

*Pour éviter tout glissement : Surfiler et Utiliser un tape autocollant lors de la réalisation de larges ourlets / To avoid any sliding: Oversew and/or use an adhesive tape when making wide hems / Ce produit est réalisé avec une chaîne polyamide, si usage rideau, nous préconisons une confection cassante au sol / This product being woven with a polyamide warp, we recommend that the fabric pools on the floor when making into curtains

Entretien / Cleaning		Usage / Usage
Ne pas laver Do not wash	Ne pas repasser Do not iron	Sièges Upholstery
Séchage tambour non autorisé Do not tumble dry	Fer moyen 110°C Cool iron	Rideaux et tentures Curtains and drapes
Pas de blanchiment Do not bleach	Fer moyen 150°C sur l'envers Medium iron on reverse	Coussins Cushions
Entretien professionnel à sec - cycle modéré Professional dry cleaning - delicate process	Fer moyen 150°C Medium iron	Store bateau Roman blind
Résultat d'abrasion / Abrasion result	M Martindale W Wyzenbeek	

Après un traitement non-feu approprié, ce tissu passe : After suitable fire retardant treatment, this fabric should pass :						
Test standard / Standard used	Ref 4715 ...	Ref 4716 ...	Ref 4717 ...	Ref 4718 ...	Ref 4719 ...	Ref 4769 ...
UK • BS 5852 PART 1 (1979) (Upholstery) • BS 5852 CRIB 5 (2006) (Upholstery) • BS 5867 PART 2 (2008) (Curtain)	- - Pass	- - Pass	- - Pass	Pass with Backcoating Pass with Backcoating Pass	Pass with Backcoating Pass with Backcoating Pass	Pass with Backcoating Pass with Backcoating Pass
Europe • EN13773 (2003) (Curtain) • EN1021 PART 1 (2006) (Upholstery) • EN1021 PART 2 (2006) (Upholstery)	Class 3 - -	Class 3 - -	Class 3 - -	Class 3 Pass with Backcoating Pass with Backcoating	Class 3 Pass with Backcoating Pass with Backcoating	Class 3 Pass with Backcoating Pass with Backcoating
IMO • IMO FTPC PART 7 (Curtain) • IMO FTPC PART 8 (Upholstery)	Pass -	Pass -	Pass -	Pass Pass with Backcoating	Pass Pass with Backcoating	Pass Pass with Backcoating
US • CAL 117 (2013) • NFPA 260 (2013) (Upholstery) • NFPA 701 (2010) (Curtain)	- - Pass	- - Pass	- - Pass	Pass with Backcoating Pass with Backcoating Pass	Pass with Backcoating Pass with Backcoating Pass	Pass with Backcoating Pass with Backcoating Pass