

**MOON** \_ 2019 \_ DESIGN **STUDIO MARELLI**



**MOON** \_ SOFA

**9MN204 CM 305X120X76H**

FABRIC: CAT. C ART. GABRIEL MEDLEY COL. 63064

BASE: OPM11 GOLD PEARL PAINTED METAL

**MOON** \_ ARMCHAIRS

**9MN101 CM 98X90X76H**

FABRIC: CAT. C ART. GABRIEL MEDLEY COL. 61003

BASE: OPM11 GOLD PEARL PAINTED METAL

**MOON** \_ OTTOMANS

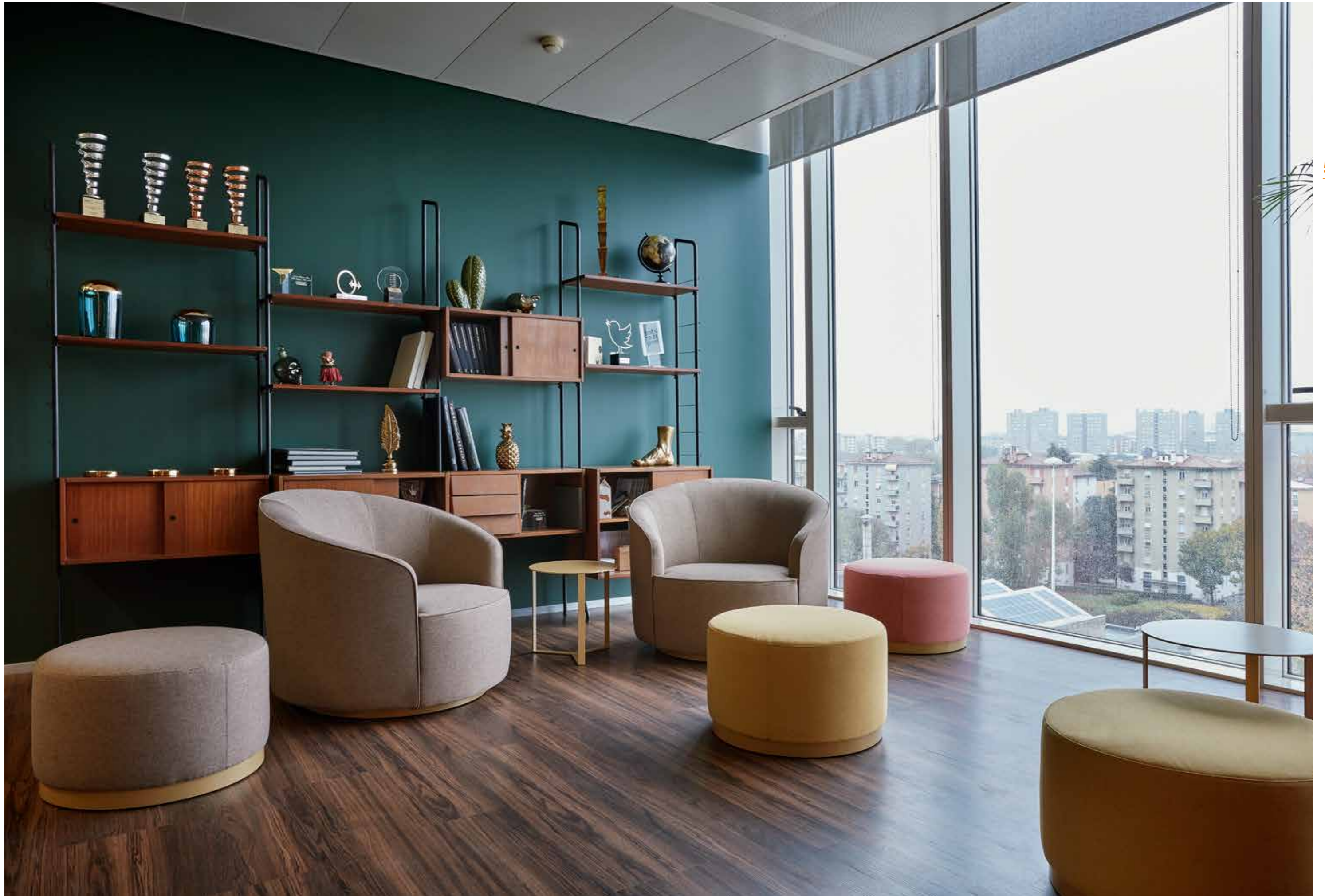
**9MN102 Ø 60X40H**

FABRICS: CAT. C ART. GABRIEL MEDLEY COL. 63064, 61003 AND 62054

BASE: OPM11 GOLD PEARL PAINTED METAL











**MOON \_ COMPOSITION CM 331X155X76H**  
 FABRIC: CAT. H ART. DEDAR SPLENDIDO COL. 29  
 BASE: OPM16 SHINY BRASS CHROME METAL  
 DECORATIVE CUSHIONS:  
**9CU106 CM 45X45**  
 IN THE SAME COLOUR AND IN COLOUR 18 SAND  
**MOON \_ ARMCHAIR**  
**9MN101 CM 98X90X76H**  
 FABRIC: CAT. H ART. DEDAR SPLENDIDO COL. 18 SAND  
**MOON \_ OTTOMANS**  
**9MN102 Ø CM 60X40H**  
 FABRIC: CAT. H ART. DEDAR SPLENDIDO COL. 29 AND 18 SAND  
**CLIP \_ SIDE TABLES**  
**7CL117 Ø CM 40X40H**  
**7CL118 Ø CM 40X50H**  
 OPM17 BRONZE METAL









**KYOTO \_ COFFEE TABLES:**

**7KY103 Ø CM 50X38H**

**7KY101 Ø CM 40X48H**

BASE: OPM15 ANTIQUE GOLD BRUSHED METAL

TOP: OPP12 GUATEMALA GREEN MARBLE

**7KY104 Ø CM 50X38H**

**7KY102 Ø CM 40X48H**

**7KY108 Ø CM 80X38H**

BASE: OPM14 SHINY BLACK CHROME METAL

TOP: OPV9 CHROME BACK-PAINTED BRONZE

GLASS



**MOON \_ SOFA**

**9MN204 CM 305X120X76H**

FABRIC: CAT. H ART. RUBELLI SPRITZ COL. 25 LICHENE

BASE: OPM11 GOLD PEARL PAINTED METAL

DECORATIVE CUSHIONS:

**9CU106 CM 45X45**

FABRICS:

CAT. H ART. RUBELLI SPRITZ COL. 25 LICHENE

CAT. H ART. CASAMANCE VERNEUIL 4099 0822

CAT. H ART. CASAMANCE MONTALEMBERT 4100 0662

**MOON \_ OTTOMANS**

**9MN102 Ø CM 60X40H**

FABRICS:

CAT. H ART. CASAMANCE BUCI 4107 0375

CAT. H ART. CASAMANCE VERNEUIL 4099 0822

CAT. H ART. CASAMANCE MONTALEMBERT 4100 0662

BASE: OPM15 ANTIQUE GOLD BRUSHED METAL





**MOON** \_ SOFA  
**9MN202 CM 250X90X76H**  
FABRIC: CAT. H ART. KVADRAT HALLINGDAL COL. 126  
METAL BASE: OPM14 SHINY BLACK CHROME







**MOON \_ SOFA****9MN202 CM 250X90X76H**

FABRIC: CAT. F ART. VESCOM PONZA COL. 7027.32

BASE: OPM14 SHINY BLACK CHROME METAL

DECORATIVE CUSHIONS

**9CU103 CM 40X40**

FABRIC: CAT. F ART. VESCOM PONZA COL. 7027.02

**TWIG \_ COFFEE TABLE****7TG104 CM 120X71X35H**

METAL BASE: OPM1 SHINY CHROME

MARBLE TOP: OPP2 MARQUINIA BLACK







SCHEDA TECNICA TECHNICAL INFORMATION

marelli



# MOON \_ 2019 \_ DESIGN STUDIO MARELLI

# MOON \_ 2019 \_ DESIGN STUDIO MARELLI

274

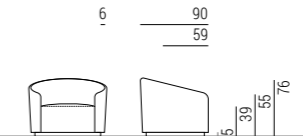
Fusto in legno massello e legno multistrato con cinghie elastiche intrecciate.  
 Imbottitura della seduta in poliuretano espanso con densità 40 kg/m<sup>3</sup> rivestito in dacron.  
 Imbottitura dello schienale in poliuretano espanso a quote differenziate con densità di 30 kg/m<sup>3</sup> e 40 kg/m<sup>3</sup>, rivestito in dacron.  
 Rivestimento fisso.

*Carcasse en bois massif et multiplis munie de bandes élastiques entrecroisées.  
 Assise rembourrée en mousse de polyuréthane d'une densité de 40 kg/m<sup>3</sup> couverte de dacron.  
 Dossier rembourré en mousse polyuréthane de différentes densités de 30 kg/m<sup>3</sup> et 40 kg/m<sup>3</sup> couverte de dacron.  
 Revêtement fixe.*

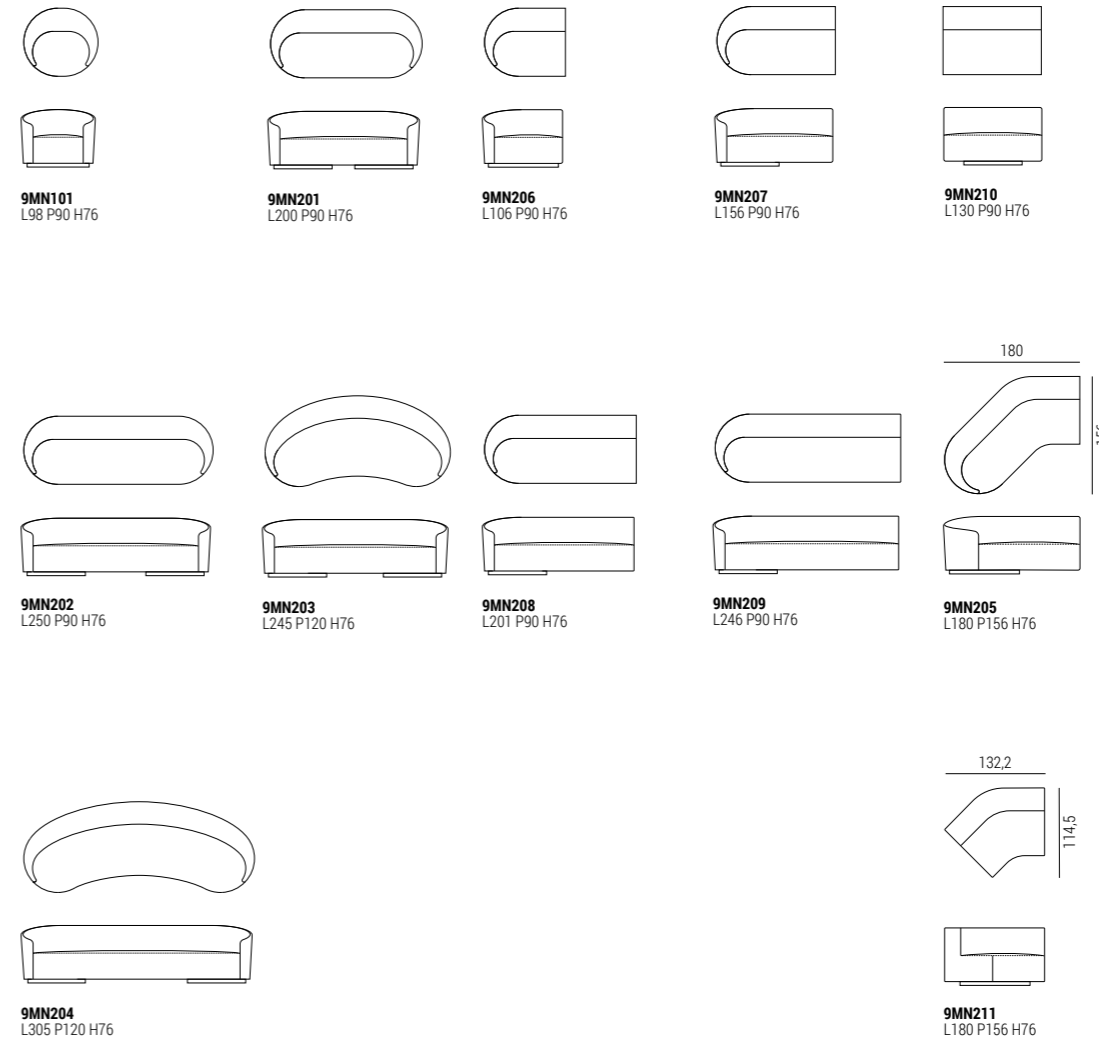
Frame made of solid wood and plywood with interwoven elastic belts.  
 Seat upholstered with polyurethane foam with density of 40 kg/m<sup>3</sup>, covered with dacron.  
 Back upholstered with polyurethane foam with different densities of 30 kg/m<sup>3</sup> and 40 kg/m<sup>3</sup>, covered with dacron.  
 Fixed covers.

Для производства каркаса используется массив дерева и многослойная фанера в сочетании с перекрещивающимися эластичными ремнями. Наполнение сиденья из вспененного пенополиуретан плотностью - 30 кг/м<sup>3</sup>, обернутого в дакрон. Наполнение спинки из вспененного пенополиуретана различной степени плотности - 30 кг/м<sup>3</sup> и 40 кг/м<sup>3</sup>, обернутого в дакрон. Чехлы несъемные.

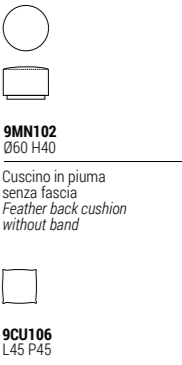
Das Gestell besteht aus Massiv- und Schichtholz, mit geflochtenen Gummigurten.  
 Sitz gepolstert mit Polyurethan-Schaumstoff 40 Kg/m<sup>3</sup>, mit Dacron bezogen.  
 Rücken gepolstert mit Polyurethan-Schaumstoff in verschiedenen Dichten 30 Kg/m<sup>3</sup> und 40 Kg/m<sup>3</sup>, mit Dacron bezogen.  
 Ribot ist immer festbezogen.



Divani Sofas



Pouf e accessori Ottomans and accessories 275



Finiture Finishes

