



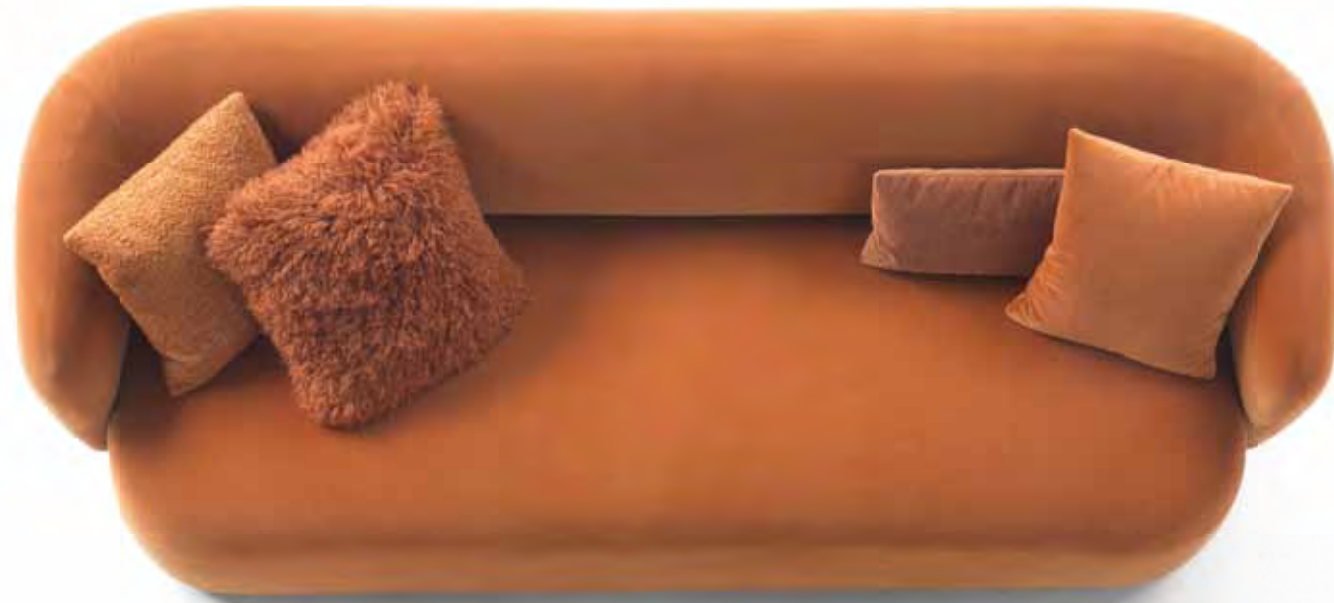
**NOAH sofa** 9NH202 cm 250x100x80h | Fabric: cat. F/G art. Misa Aime col. M188 622 Badiane | Cushions: 1 x cushion 9CU106 cm 45x45 Fabric: cat. F/G art. Misa Aime col. M188 622 Badiane | 2 x cushions 9CU106 cm 45x45 Fabric: cat. D/E art. Tresigallo col. 08 **NOAH curved sofa** 9NH301 cm 250x110x80h Fabric: cat. D/E art. Tresigallo col. 13 | 2 x cushions 9CU106 cm 45x45 Fabric: cat. D/E art. Tresigallo col. 13 | 1 x cushion 9CU106 cm 45x45 Fabric: cat. H art. Rubelli Spritz col. 25 lichene **ARTHUR side tables** 7ART201 ø cm 50x50h | 7ART202 ø cm 60x40h | 7ART203 ø cm 120x30h | Top: OPP7 Calacatta marble | Base: OPM20 Delabré brass brushed metal **GEORGE sideboard** 7GE201 cm 220x50x71h | Wooden structure: OPR15 moka matt stained oak | Top: OPP7 Calacatta marble | Base: OPM15 antique gold brushed metal **REFLEX mirror** 7RE106 ø 120x8 Bronze mirror OPM15 antique gold brushed metal frame

**marelli**



**NOAH sofa** 9NH202 cm 250x100x80h | Fabric: cat. F/G art. Misa Aime col. M188 622 Badiane | Cushions: 1 x cushion 9CU106 cm 45x45 Fabric: cat. F/G art. Misa Aime col. M188 622 Badiane | 2 x cushions 9CU106 cm 45x45 Fabric: cat. D/E art. Tresigallo col. 08 **ATENE coffee tables** 7AT104 ø cm 100x30h | 7AT101 ø cm 50x40h | Top: OPP3 Emperador brown marble | Base: OPM17 bronze metal





**NOAH sofa** 9NH202 cm 250x100x80h | Fabric: cat. F/G art. Misia Aime col. M188 622 Badiane | Cushions: 1 x cushion 9CU106 cm 45x45 | Fabric: cat. F/G art. Misia Aime col. M188 622 Badiane | 1 x cushion 9CU106 cm 45x45 | Fabric: cat. D/E art. Tresigallo col. 08 | 1 x cushion 9CU106 cm 45x45 | Fabric: Misia Azur Cotonneux M282 204 Mordoré | 1 x cushion 9CU107 cm 25x50 | Fabric: cat. H art. Casamance Lanata 4454 09 60 **NOAH Armchair** 9NH101 cm 90x90x76,5h **NOAH curved sofa** 9NH301 cm 250x110x80h | Fabric: cat. D/E art. Tresigallo col. 08 | Cushions: 1 x cushion 9CU106 cm 45x45 | Fabric: cat. F/G art. Misia Aime col. M188 622 Badiane | 1 x cushion 9CU106 cm 45x45 | Fabric: cat. D/E art. Tresigallo col. 08 | 1 x cushion 9CU106 cm 45x45 | Fabric: cat. H art. Casamance Lanata 4454 09 60 **ATENE coffee tables** 7AT104 ø cm 100x30h | 7AT101 ø cm 50x40h | Top: OPP3 Emperador brown marble | Base: OPM17 bronze metal



**NOAH curved sofa** 9NH301 cm 250x110x80h | Fabric: cat. D/E art. Tresigallo col. 13 | Cushions: 2 x cushions 9CU106 cm 45x45 | Fabric: cat. D/E art. Tresigallo col. 13 | 1 x cushion 9CU106 cm 45x45 | Fabric: cat. H art. Rubelli Spritz col. 25 lichene **ARTHUR side tables** 7ART201 ø cm 50x50h | 7ART202 ø cm 60x40h | Top: OPP7 Calacatta marble | Base: OPM20 Delabré brass brushed metal

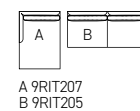




Detail of **NOAH** sofa and **ARTHUR** side tables with OPP7 Calacatta marble top and OPM20 délabré brass brushed metal



**RITZ composition** cm 318x152 | Outside: Leather cat. Extra art. Manhattan col. 2172 | Inside: Fabric cat. D/E art. Jurga 02 | Base: OPM15 antique gold brushed metal  
 | Cushions: 3 x 9CU106 cm 45x45 | Leather cat. Extra art. Manhattan col. 2172 **ARTHUR tables** 7ART203 ø cm 120x30h | 7ART202 ø cm 60x40h | Top: OPP7 Calacatta marble | Base: OPM20 Délabé brass brushed metal



A 9RIT207  
 B 9RIT205



Moon | Arthur

**MOON curved sofas** 9MN204 cm 305x120x76h | Fabric: cat. F/G art. Misia Aime M188 705 Mordoré | Base: OPM13 antique brass brushed metal | Cushions: 1 x 9CU106 cm 45x45 | Fabric: cat. F/G art. Misia Aime M188 631 Terre d'ombre | 1 x 9CU106 cm 45x45 | Fabric: cat. D/E art. Lucinasco col. 22 **ARTHUR table** 7ART213 ø cm 120x30h | Top: OPV4 RAL 9017 traffic black back-painted glass | Base: OPM20 Délabré brass brushed metal





**MOON curved sofas** 9MN204 cm 305x120x76h | Fabric: cat. F/G art. Misia Aime M188 705 Mordoré | Base: OPM13 antique brass brushed metal | Cushions: 1 x 9CU106 cm 45x45 | Fabric: cat. F/G art. Misia Aime M188 631 Terre d'ombre | 1 x 9CU106 cm 45x45 | Fabric: cat. D/E art. Lucinasco col. 22





**ARTHUR table** 7ART213 ø cm 120x30h | Top: OPV4 RAL 9017 traffic black back-painted glass | Base: OPM20 Délabré brass brushed metal

# Schede tecniche

TECHNICAL INFORMATION



## Tavoli Tables



**7ART201**  
Top marmo/Marble top  
**7ART211**  
Top vetro/Glass top  
ø50 H50

**7ART202**  
Top marmo/Marble top  
**7ART212**  
Top vetro/Glass top  
ø60 H40

**7ART204**  
Top marmo/Marble top  
**7ART214**  
Top vetro/Glass top  
ø100 H30

**7ART203**  
Top marmo/Marble top  
**7ART213**  
Top vetro/Glass top  
ø120 H30

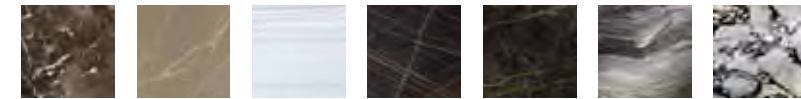
## Finiture Finishes

Top in marmo  
Marble top



**Code**

White Carrara marble <b>OPP1</b>	Black Marquina marble <b>OPP2</b>	Brown Emperador marble <b>OPP3</b>	Grey Serena stone <b>OPP4</b>	Beige Brera stone <b>OPP5</b>	Calacatta gold marble <b>OPP7</b>	Black and gold marble <b>OPP9</b>	Perfetto brown marble <b>OPP10</b>	Grey Stone marble <b>OPP11</b>	Guatemala green marble <b>OPP12</b>
-------------------------------------	--------------------------------------	---------------------------------------	----------------------------------	----------------------------------	--------------------------------------	--------------------------------------	---------------------------------------	-----------------------------------	----------------------------------------



**Code**

Velvet brown marble <b>OPP13</b>	Amani Bronze marble <b>OPP14</b>	Covelano white marble <b>OPP15</b>	Sahara noir marble <b>OPP16</b>	Port Laurent marble <b>OPP17</b>	Arabescato orobico grey marble <b>OPP20</b>	Calacatta violet marble <b>OPP21</b>
-------------------------------------	-------------------------------------	---------------------------------------	------------------------------------	-------------------------------------	------------------------------------------------	-----------------------------------------

Top in Gres Porcellanato  
Porcelain Stoneware Top



**Code**

Nero Marquina <b>OPG2</b>	Statuario Select <b>OPG3</b>	Calacatta Royal <b>OPG4</b>
------------------------------	---------------------------------	--------------------------------

Top in vetro  
Glass top



**Code**

RAL 9016 traffic white back-painted glass <b>OPV3</b>	RAL 9017 traffic black back-painted glass <b>OPV4</b>	RAL 7044 silk grey back-painted glass <b>OPV5</b>	RAL 1019 grey beige back-painted glass <b>OPV6</b>	Chrome back-painted bronze glass <b>OPV9</b>	Chrome back-painted grey glass <b>OPV10</b>
----------------------------------------------------------	----------------------------------------------------------	------------------------------------------------------	-------------------------------------------------------	-------------------------------------------------	------------------------------------------------

Base in metallo  
Metal Base



**Code**

Brushed matt chrome metal <b>OPM2</b>	Brushed matt dark grey metal <b>OPM3</b>	RAL 9017 black painted metal <b>OPM6</b>	RAL 9016 white painted metal <b>OPM7</b>	Classic bronze painted metal <b>OPM9</b>	Golden beach painted metal <b>OPM10</b>	Gold pearl painted metal <b>OPM11</b>	Brushed copper metal <b>OPM12</b>	Brushed antique brass metal <b>OPM13</b>	Brushed antique gold metal <b>OPM15</b>
------------------------------------------	---------------------------------------------	---------------------------------------------	---------------------------------------------	---------------------------------------------	--------------------------------------------	------------------------------------------	--------------------------------------	---------------------------------------------	--------------------------------------------



**Code**

Anodyc bronze metal <b>OPM18</b>	Delabre brass brushed metal <b>OPM20</b>	Dark bronze painted metal <b>OPM21</b>	Prosecco painted metal <b>OPM22</b>	Tobacco painted metal <b>OPM23</b>
-------------------------------------	---------------------------------------------	-------------------------------------------	----------------------------------------	---------------------------------------