

marelli

ART. NABUK CAT. LUSSO



LUXURY COLOUR PALETTE

marelli

COLOUR PALETTE



MUGHETTO
C/3402



BEIGE
C/3404



ANGORA
C/3403



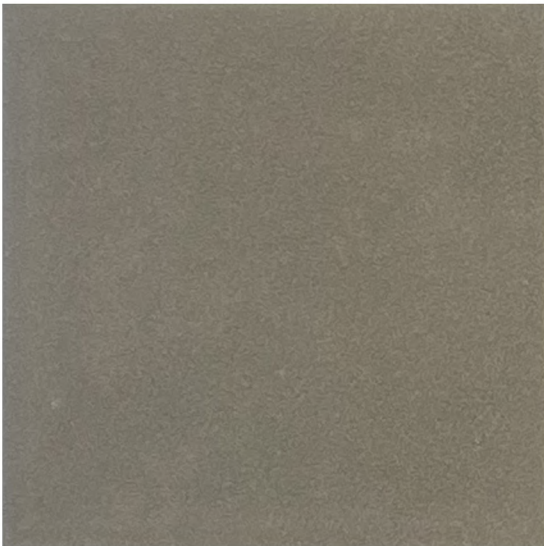
BETULLA
C/3411



NOCCIOLA
C/3406



MOGANO
C/3407



TARTUFO
C/3405



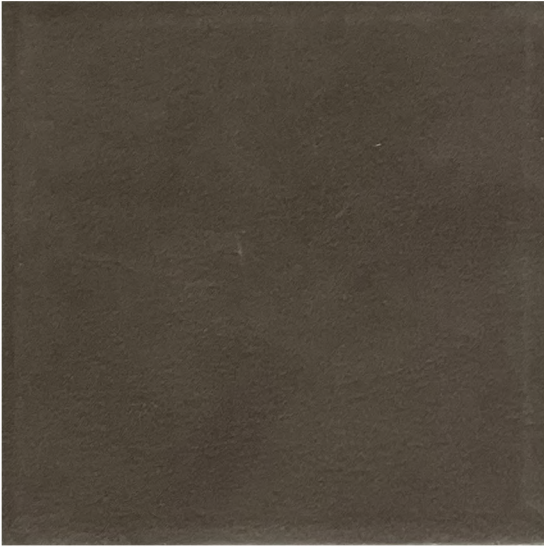
ACCIAIO
C/3415



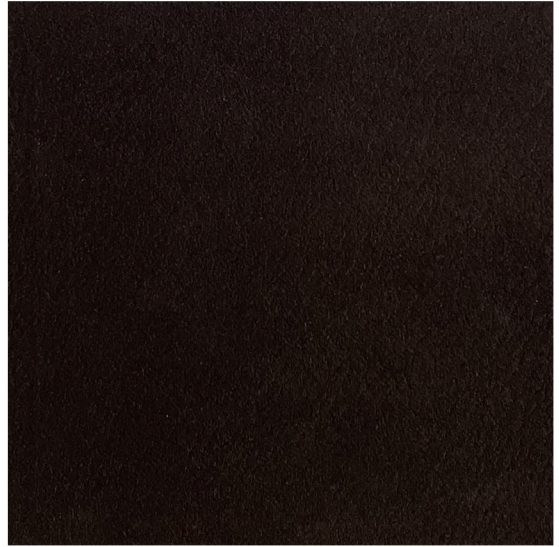
AVENA
C/3408



TALPA
C/3409



MARMOTTA
C/34016



WENGÈ
C/3410



OCRA
C/3440



SIENA
C/3421



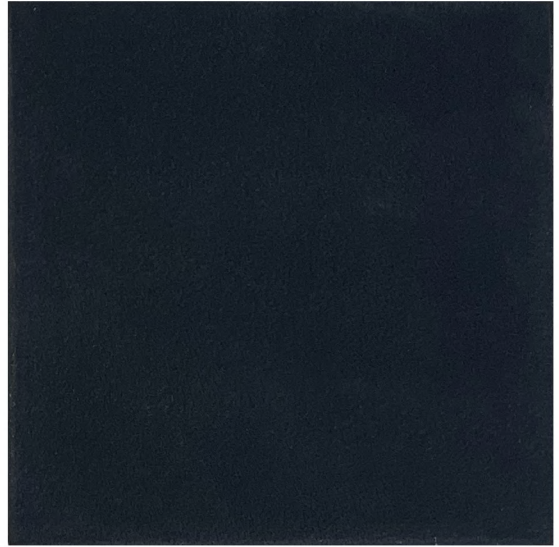
LILLA
C/3417



BORDEAUX
C/3424



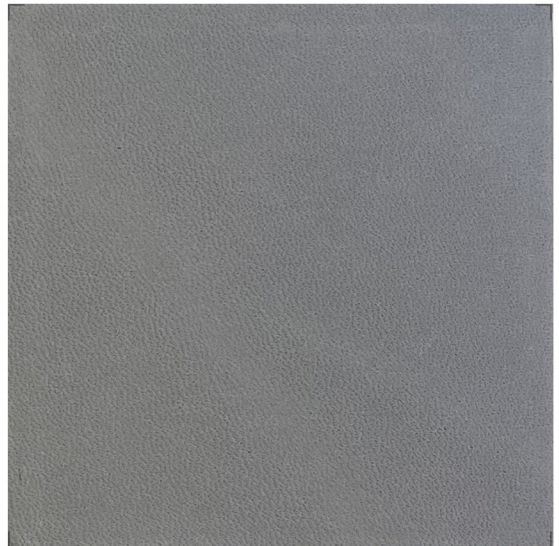
CADETTO
C/3431



NAVY
C/3437



ANTRACITE
C/3401



PLATINO
C/3414



BLUETTE
C/3436

ART. **NABUK** CAT. **LUSSO**
LEATHER

Nabuk is an extraordinary water repellent leather, with a dreamy touch, capable of giving unique sensations. Produced with cattle of European origin, has a thickness of 1.1-1.3 mm. The size of each skin is about 5 sqm. Due to the technical characteristics of the finishing it is not possible to grant high surface resistances to rubbing and light.

| | |
|-------------------------|---|
| HIDE TYPE: | European Bovine |
| TANNING: | Mineral |
| DYEING: | Penetrating |
| GRAIN: | Natural |
| SURFACE: | Full grain |
| LEATHER TYPE: | Water repellent nabuck |
| THICKNESS: | mm 1,1-1,3 |
| AVERAGE SIZE: | >= mq 5,0 |
| DRY FRICTION: | ISO 11640 >= 100 cycles |
| DAMP FRICTION: | ISO 11640 >= 25 cycles |
| FLEXING: | >= 10.000 cycles |
| LIGHT FASTNESS: | ISO 105-B02 >= 3 blue scale |
| HEAT AGEING: | ISO 17228 >= 3 grey scale |
| FIRE RESISTANCE: | ISO 1021/1-2, BS 5852 part 1, source 0, 1 IMO FTP8 Res.A652, California TB117 |

| | |
|--------------|--|
| CARE: | <ul style="list-style-type: none">• Keep away from direct sunlight• Keep away from direct heat• Avoid cleaning with aggressive products• Avoid contact between light and dark colours even between different materials• Regularly dust with a soft and dry cloth |
|--------------|--|

marelli