

MISIA  
PARIS

---

AIME

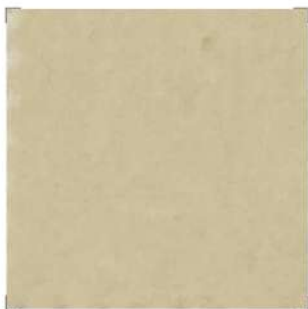
LUXURY COLOUR PALETTE

maire

# COLOUR PALETTE



**BLEU EGYPTIEN**  
M188-714 AIME



**ALBÂTRE**  
M188-301 AIME



**IVOIRE**  
M188-402 AIME



**PERLE**  
M188-503 AIME



**GREGE**  
M188-604 AIME



**MORDORÉ**  
M188-705 AIME



**SEPIA**  
M188-806 AIME



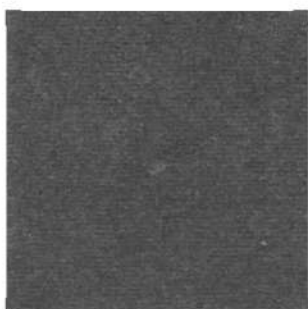
**CACAO**  
M188-907 AIME



**GRIS DE MAURE**  
M188-108 AIME



**GIVRE**  
M188-209 AIME



**ARDOISE**  
M188-310 AIME



**OPALINE**  
M188-411 AIME





**BLEU TURQUIN**  
M188-512 AIME



**SEYCHELLES**  
M188-613 AIME



**SAPHIR**  
M188-815 AIME



**BLEU MISIA**  
M188-916 AIME



**ROUGE D'ANDRINOPLE**  
M188-117 AIME



**BOURGOGNE**  
M188-218 AIME



**TERRE DE SIENNE**  
M188-319 AIME



**CUIVRE**  
M188-420 AIME



**ORANGE BRÛLÉE**  
M188-521 AIME



**BADIANE**  
M188-622 AIME



**PÊCHE**  
M188-723 AIME



**VIEUX-ROSE**  
M188-824 AIME



**AMETHYSTE**  
M188-925 AIME



**AUBERGINE**  
M188-126 AIME



**VERT EMPIRE**  
M188-227 AIME



**JAUNE IMPERIAL**  
M188-328 AIME



**VERT OLIVE**  
M188-429 AIME



**MATCHA**  
M188-530 AIME



**TERRE D'OMBRE**  
M188-631 AIME



**OR**  
M188-732 AIME



**CARBONE**  
M188-833 AIME

ART. **AIME** CAT. **E**  
VELVET

---

Made in Italy, "Aime" is a cotton velvet, which, thanks to its dense pile, has a beautifully soft and silky appearance. This is enhanced by the inclusion of modal in the weft which also makes the fabric stronger. A special silicon-based finishing prevents the velvet from marking and gives it an exceptional feel. The high martindale makes it ideal for curtains and heavy-duty upholstery. With a choice of thirty-three colours "Aime" has the largest colour range in the collection.

---

<b>COMPOSITION:</b>	93% cotton, 7% MD
<b>WIDTH:</b>	140 cm
<b>WEIGHT:</b>	521 gr / m <sup>2</sup>
<b>MARTINDALE:</b>	60.000 cycles

---

**CARE:**



**WITHOUT TREATMENT, THIS FABRIC PASSES DIRECTLY :**

EU • EN1021 PART 1 (2006) (Upholstery) • EN1021 PART 2 (2006) (Upholstery)  
UK • BS 5852 PART 1 (1979) (Upholstery) • BS 5852 Crib 5 (2006) (Upholstery)  
USA • CAL 117 (2013)

**MISIA**

PARIS