

---

CASAMANCE

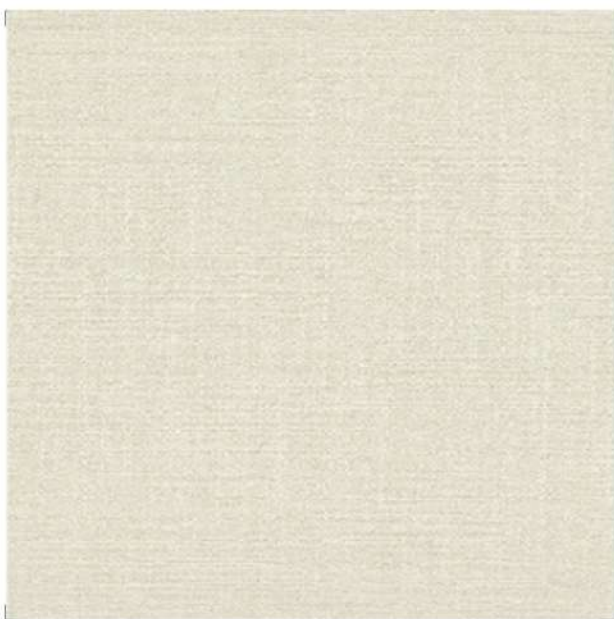
FABRIC - ART. INTERVIEW CAT. F-G

---

COLOUR PALETTE  
COLLECTION 2022

Interview

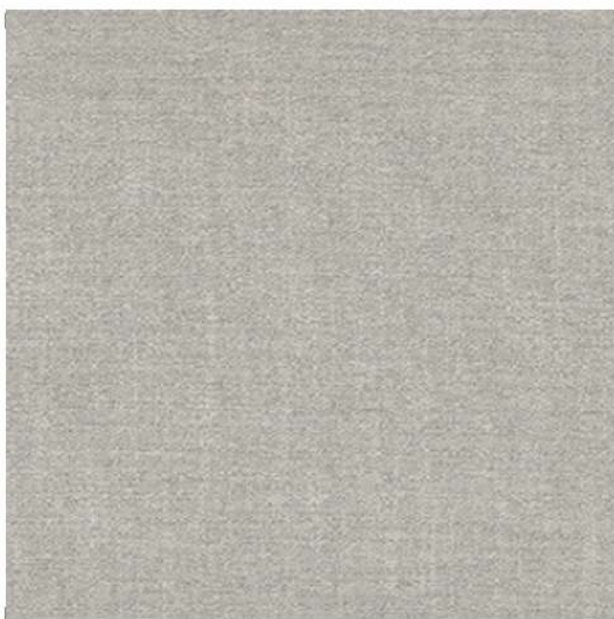
# COLOUR PALETTE



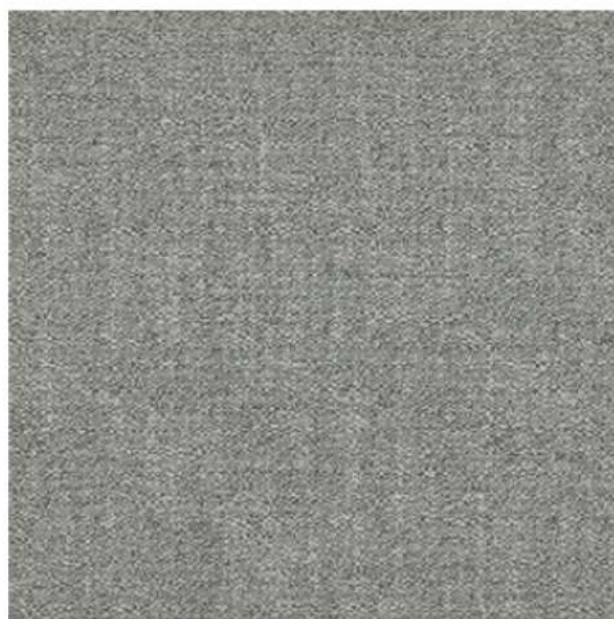
INTERVIEW  
3691 04 82



INTERVIEW  
3691 05 41



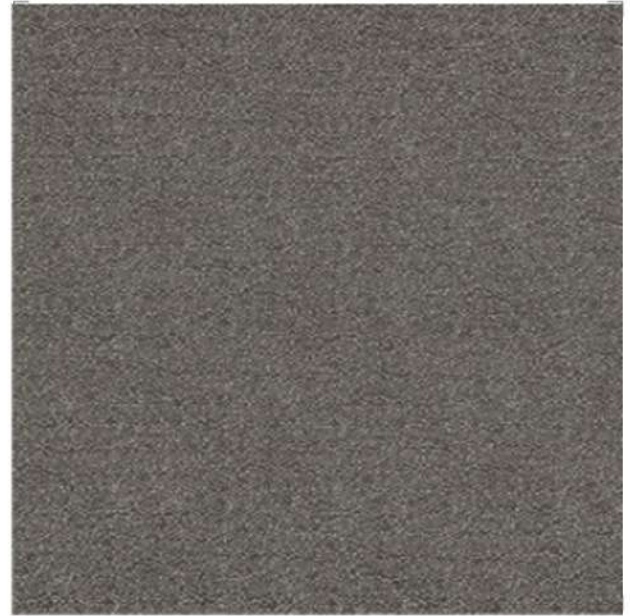
INTERVIEW  
3691 06 74



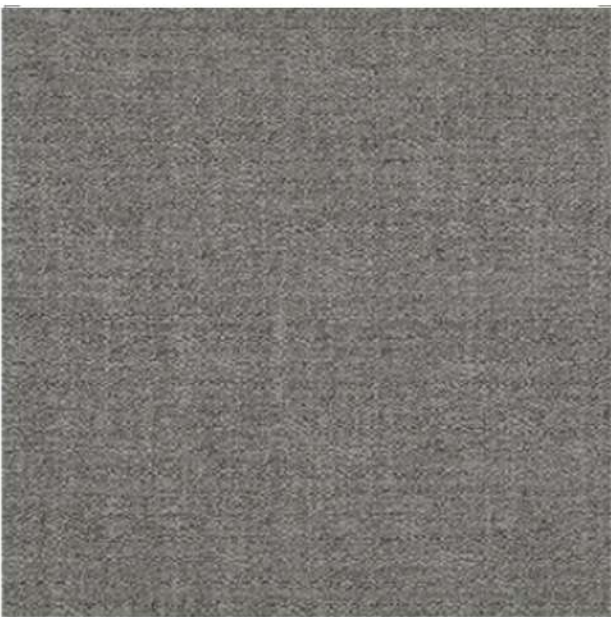
INTERVIEW  
3691 07 32



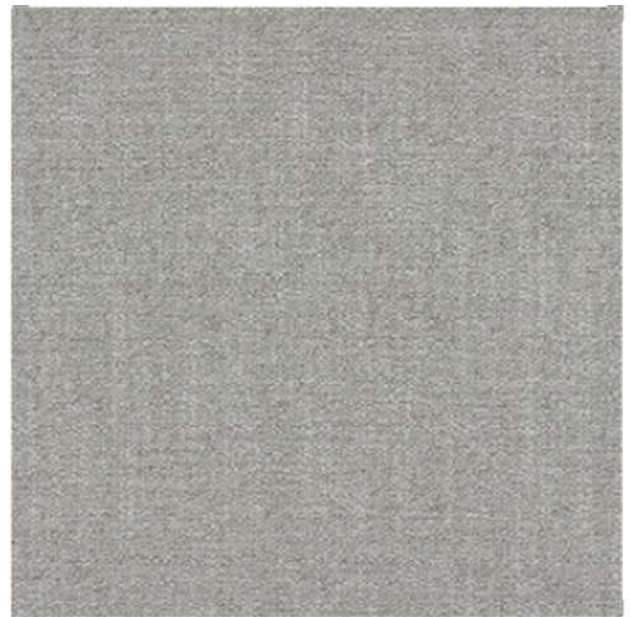
INTERVIEW  
3691 08 16



INTERVIEW  
3691 03 25



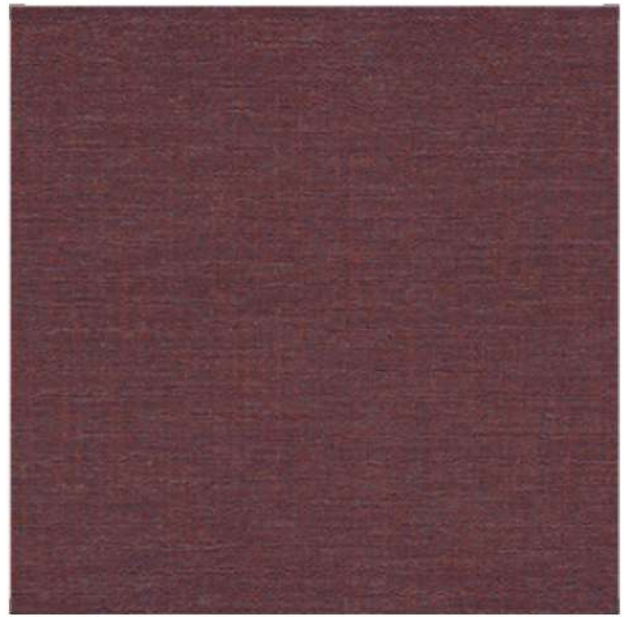
INTERVIEW  
3691 02 58



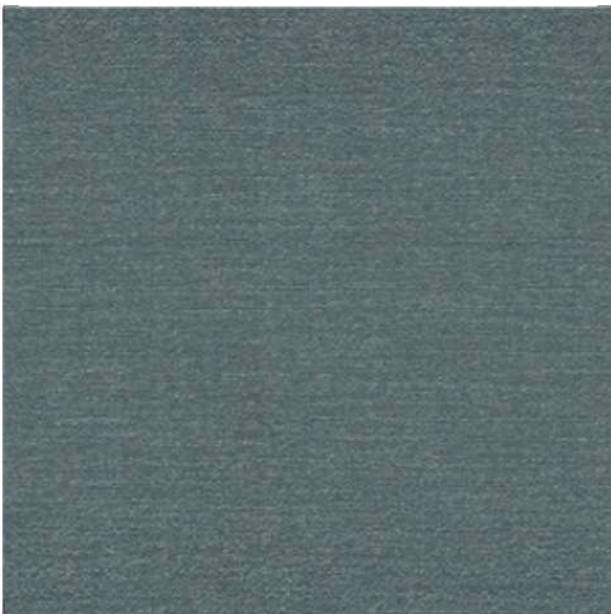
INTERVIEW  
3691 01 45



INTERVIEW  
3691 11 38



INTERVIEW  
3691 13 79



INTERVIEW  
3691 10 62



INTERVIEW  
3691 09 73

---

# CASAMANCE

FABRIC - ART. **INTERVIEW** CAT. **F-G**

---

<b>COMPOSITION:</b>	40% VI 33% CO 11% LI 11% PC 5% PES
<b>WIDTH:</b>	140 cm
<b>WEIGHT:</b>	550 g / m <sup>2</sup>
<b>MARTINDALE:</b>	40000
<b>WYZENBEEK:</b>	60000
<b>HEAVY DUTY UPHOLSTERY:</b>	SUPERIOR OR EQUAL TO 40 000 CYCLES (MARTINDALE) AND SUPERIOR OR EQUAL TO 30,000 DOUBLE RUBS (WYZENBEEK)

---

**CARE:**



**marelli**

Giulio Marelli Italia SpA

Via Indipendenza 159 - 20821 Meda (MB) Italia T ++39 0362 342116

info@giuliomarelli.com www.giuliomarelli.com