

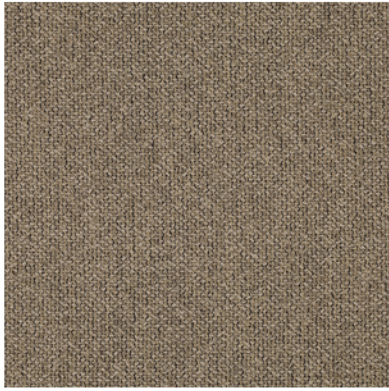
marelli
HOME & CONTRACT
FABRIC
ART. COIL

CAT. D-E

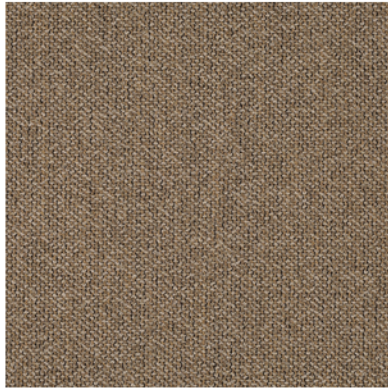
marelli

HOME & CONTRACT

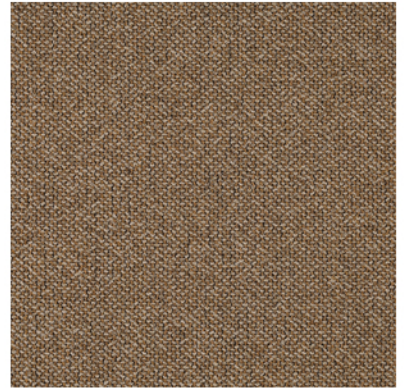
FABRIC
SAMPLES



COIL
01



COIL
02



COIL
03



COIL
04



COIL
09



COIL
05



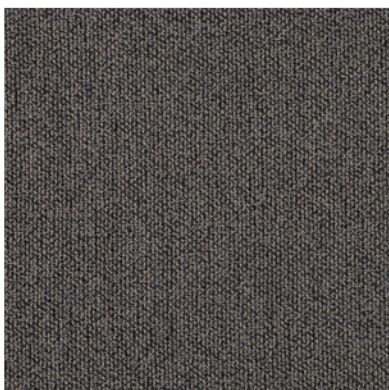
COIL
06



COIL
10



COIL
11



COIL
08



COIL
07

FABRIC

ART. COIL

CAT. D-E

COMPOSITION:

WIDTH:

WEIGHT:

ABRASION RESISTANCE:

PILLING:

LIGHT FASTNESS:

FASTNESS TO RUBBING:

FLAMMABILITY:

50% CO 19% PC 17% PL 7% VI 7% WO

APP. 140 CM

640 G/M² (+/- 5%)

100000 MARTINDALE CYCLES EN ISO 12947-2

3/4 EN ISO 12945-2

4/5 EN ISO 105-B02

WET 4; DRY 5 EN ISO 105X12

CALIFORNIA TB 117:2013

EN 1021.1&2 (C&M)

BS 5852 PART 0-1 (C&M)

BS 5852-CRIB5 (WITH COATING)

CARE:



NOTE: ECHOING THE ELEGANT SIMPLICITY OF SPIRALING BOAT ROPES, COIL TRANSFORMS THE CONCEPT OF ENDLESSNESS INTO A TANGIBLE DESIGN. EACH LINE IS METICULOUSLY STRUCTURED, YET RETAINS A LOOSE, FLOWING QUALITY THAT INVITES DETAILED EXPLORATION. CRAFTED FROM SOFT, LIGHT MATERIALS, COIL OFFERS A STIMULATING TOUCH AND BRINGS A SENSE OF ORGANIC BEAUTY TO ANY SPACE, EFFORTLESSLY ENHANCING YOUR ENVIRONMENT WITH ITS REFINED ELEGANCE.

